



Tokyo 2020 Olympic Games

Sailing

Sailing Instructions

Version 23 July 2021

Change Log

Amendment 01: 2.2, 2.8, 4.1, 15.2, 19.1, 19.4

Amendment 02: 17.1, 18.7, 19.3

1. RULES

Additional Rules referenced in the Notice of Race or Sailing Instructions will be published on the World Sailing website (tokyo2020.sailing.org)

- 1.1 The regatta is governed by the rules as defined in *The 2021-2024 Racing Rules of Sailing* (RRS). Other documents under RRS Definition: Rule (g) are listed in NoR 1.
- 1.2 For the Men's Skiff, Women's Skiff and Mixed Multihull Events, RRS 44.1 and RRS P2.1 are changed so that the Two-Turns Penalty is replaced by the One-Turn Penalty.
- 1.3 In RRS 44.2 insert after the first sentence: "However, if Mark 1a is set, a boat may take a penalty for an incident in the zone around Mark 1 or on the leg between Mark 1 and Mark 1a, as soon as possible after leaving the zone around Mark 1a".
- 1.4 For Medal Races World Sailing Addendum Q, Umpired Fleet Racing, will apply and changes a number of racing rules.
 - 1.4.1 The Addendum Q, Umpire Fleet Racing can be found at <https://www.sailing.org/documents/racingrules/experimental-rules.php>
 - 1.4.2 The Addendum Q has been approved by World Sailing in accordance with rule 86.2 and Regulation 28.1.3. It applies to all Medal Races and all pre-race or post-race activities related to them.
 - 1.4.3 Addendum M of the SIs includes changes to the Sailing Instructions for Medal Races.
- 1.5 Boats are required to display Advertising and/or event branding in accordance with instructions issued by the Organizing Authority.

2. [DP] [NP] SAFETY REGULATIONS

- 2.1 [DP] RRS 40.1 applies at all times while afloat except:
 - 2.1.1 for all athletes, when not racing and alongside a registered support vessel which has its engine off, or
 - 2.1.2 for the Men's and Women's Windsurfer Events, RRS 40.1 does not apply from the display of the orange flag for each race until 5 minutes after finishing. However, if flag Y is displayed with the orange flag, RRS 40.1 continues to apply.
- 2.2 Boats not leaving the harbour for a scheduled race shall promptly notify Race Officials Secretariat.
- 2.3 [SP] Before leaving shore, athletes shall personally deposit their accreditation at the Beach Master.
- 2.4 [SP] On returning to shore or when no more races are scheduled for that boat for the day athletes shall personally collect their accreditation at the Beach Master before their protest time limit.
- 2.5 [SP] Before leaving shore to race, an athlete shall personally collect their boat's tracking module at the Beach Master.
- 2.6 [SP] When no more races are scheduled for a boat on that day, an athlete or support team member shall deposit their tracking module at the Beach Master before their protest time limit.

- 2.7 [SP] A boat that retires from racing shall notify the Race Committee before leaving the race area if possible and shall complete a retirement declaration form at the Race Officials Secretariat as soon as possible after returning ashore.

2.8 Tsunami warnings:

- 2.8.1 A tsunami warning will be broadcast over Very High Frequency and personal mobile radios.
- 2.8.2 Races will be abandoned using flag N over a black and orange pennant and all boats and vessels shall head to the tsunami evacuation position. The signal vessel will display flag L.
- 2.8.3 The tsunami evacuation position is at: N35° 15'. E139° 30', southeast of the Fujisawa race area and southwest of the Sagami race area.
- 2.8.4 On arrival at the tsunami evacuation position, athletes and support persons shall register with their race committee signal vessel.

3. [DP] CODE OF CONDUCT

3.1 Athletes and support persons shall:

- 3.1.1 comply with any reasonable request from a regatta official;
- 3.1.2 handle any boats and equipment provided by the Organizing Authority with proper care and seamanship, without interfering with its functionality, and in compliance with the ER; and
- 3.1.3 not in any way interfere with the functionality of supplied media or timing equipment.

3.2 [SP] Boats not racing shall avoid the area where boats are racing and any official vessel.

3.3 [SP] Boats that are on a race area to which they are not assigned shall avoid the area where boats are racing and any official vessel.

4. COMMUNICATIONS WITH ATHLETES

4.1 Notices will be posted on the Official Notice Board located in Azumaya (the permanent building between the cruiser marina and Sport Information).

4.2 Notices will also be posted at <https://www.sailing.org/tokyo2020>. Failure to post a notice on the website will not be grounds for redress. This changes RRS 62.

4.3 Flag L will only be displayed ashore when a notice affecting that day's racing is posted which:

- 4.3.1 makes a change of race area;
- 4.3.2 makes a change of warning signal time; or
- 4.3.3 changes a sailing instruction,

This changes Race Signals.

4.4 Signals ashore will be displayed from the Sailing Centre.

4.5 When flag AP is displayed ashore, '1 minute' is replaced with the times in minutes shown below in the Race Signal AP.

Race Area	Race Signal AP not less than time
Enoshima, Kamakura	30
Fujisawa, Zushi	60
Sagami, Hayama	75

- 4.6 [SP] [NP] A boat shall not leave the shore until flag D is displayed ashore. The warning signal will be made not less than the time in minutes shown below after flag D is displayed or not before the schedule time, whichever is later.

Race Area	Warning Signal not less than
Enoshima, Kamakura	30
Fujisawa, Zushi	60
Sagami, Hayama	75

- 4.7 [DP] When flags AP over H or N over H are displayed from a Race Committee vessel, all boats shall immediately return ashore and shall wait there for further signals. (This changes Race Signals AP over H and N over H.)

5. CHANGES TO SAILING INSTRUCTIONS

- 5.1 Except for changes to the schedule of races and race area assignments, changes to the Sailing Instructions will be posted either:
- 5.1.1 no later than 2 hours before the scheduled time of the first race affected; or
 - 5.1.2 no later than 15 minutes before flag AP is removed for a race that is affected.
- 5.2 Any changes to the Sailing Instructions will be approved by a World Sailing Technical Delegate.

6. FORMAT OF RACING

- 6.1 The format for each Event consists of an opening series and a medal race.
- 6.2 Opening Series

For the opening series of each Event the number of races scheduled is as follows:

Event	Number of Races	Maximum Races per Day
Men's One Person Dinghy Women's One Person Dinghy Men's One Person Dinghy Heavyweight Men's Two Person Dinghy Women's Two Person Dinghy	10	3
Men's Windsurfer Women's Windsurfer	12	3
Men's Skiff Women's Skiff Mixed Multihull	12	4

6.3 Medal Race

- 6.3.1 A medal race will be scheduled for each Event with 6 or more opening series races completed.
- 6.3.2 The 10 boats ranked highest in the opening series will be assigned to compete in the medal race.
- 6.3.3 Initial assignments to a medal race will be based on the ranking available at 1800 the day before a medal race. Any changes to the initial assignments will be posted no later than 0800 on the day of the medal race. The International Jury may extend these time limits.

7. [DP][SP] RACE AREAS AND FIELD OF PLAY

- 7.1 All boats shall remain in the Field of Play at all times whilst afloat. No part of a boat shall cross the boundary. While a boat is racing, the boundary ranks as an obstruction.
- 7.2 If any part of a boat crosses the boundary of the Field of Play, she may be subject to security quarantine and search before being permitted back into the Venue. The actions of the Organizing Authority relating to security quarantine and searches will not be grounds for redress. This changes RRS 62.

8. SCHEDULE OF RACES AND RACE AREA ASSIGNMENTS

- 8.1 The race schedule, including the time of the first warning signals and assignment of Events to race areas, is shown in SI Addendum B.
- 8.2 The Race Committee will post an update to SI Addendum B on a daily basis, no later than 1900 the previous evening.
- 8.3 The Race Committee may reassign an Event to any race area no later than 2 hours before the scheduled starting signal. However:
 - 8.3.1 when flag AP is displayed ashore, the race area may be changed by posting a notice until 15 minutes before the AP is removed; and
 - 8.3.2 when flag AP is displayed afloat, the race area may be changed. The Race Committee will display flag L over the Event(s) flag and move to the new race area.
- 8.4 Once 6 opening series races have been completed, the Race Committee:
 - 8.4.1 will continue the opening series on any remaining opening series days; and
 - 8.4.2 will only use an opening series reserve day if racing is behind schedule at that point.

- 8.5 A medal race will not be scheduled unless at least 6 opening series races have been completed. If necessary, the Race Committee will use the reserve day, the medal race day and the reserve medal race day to complete at least 6 opening series races.
- 8.6 The Race Committee will run a medal race on the medal race day or the reserve medal race day once 6 opening series races have been completed. However, a medal race will never be scheduled on the same day as an opening series race for that Event.

9. COURSES

- 9.1 The diagrams in SI Addendum C show the courses, the course designations, the approximate angles between legs, the order in which marks are to be passed, and the side on which each mark is to be left.
- 9.2 No later than the warning signal, the race committee starting vessel will display the course signal and, except for Men's Windsurfer and Women's Windsurfer Events, the approximate compass bearing of the first leg.

10. MARKS

- 10.1 Marks 1, 2, 3, and 4, or associated gate marks, will be truncated cones as follows:

Race Area	Marks 1, 2, 3, 4	New Mark for Marks 1 & 2	VHF Channels
Enoshima	Yellow	Yellow with a black band	87
Kamakura	Pink	Pink with a black band	88
Fujisawa	Orange	Orange with a black band	10
Sagami	Lime Green	Lime Green with a black band	72
Zushi	Yellow	Yellow with a black band	9
Hayama	Red	Red with a black band	71

- 10.2 Mark 1a will be an orange cylindrical buoy.
- 10.3 The starting and finishing line marks will be race committee vessels or inflatable marks of the same colour as the course marks.
- 10.4 In the event that a gate mark is missing and has not been replaced with an object displaying flag M, the remaining mark shall be rounded to port.

11. EVENT FLAGS

Event flags will be class insignia on the following background:

Event	Class Insignia	Background Colour
Men's Windsurfer	RS:X	White
Women's Windsurfer	RS:X	Light Blue
Men's One Person Dinghy	Laser Standard	White
Women's One Person Dinghy	Laser Radial	Light Blue
Men's One Person Dinghy Heavyweight	Finn	White
Men's Two Person Dinghy	470	White
Women's Two Person Dinghy	470	Blue
Men's Skiff	49er	White
Women's Skiff	49er FX	Light Blue
Mixed Multihull	Nacra	White

12. THE START

- 12.1 The starting line will be between a staff displaying an orange 'Start' flag on the race committee vessel at the starboard end and either
- 12.1.1 the course side of the port-end inflatable starting mark, or
 - 12.1.2 a staff displaying an orange 'Start' flag on the race committee vessel at the port end.
- 12.2 [DP] A buoy may be attached to the race committee starting vessel anchor line just below keel depth. Boats shall not pass between this buoy and the race committee starting vessel at any time. This buoy is part of the race committee starting vessel ground tackle.
- 12.3 [DP] When a starting sequence is in progress, boats whose warning signal has not been made shall avoid the starting area. The starting area is defined as the area 75 meters from the starting line and marks in all directions.
- 12.4 RRS 26 and Preparatory Signals in Race Signals are deleted. Races will be started using the following signals. Times shall be taken from the display of visual signals and the absence of a sound signal shall be disregarded. This changes RRS 26, Race Signals and RRS P5.2(c).

<i>Minutes before starting signal</i>	<i>Visual signal displayed</i>	<i>Visual signal removed</i>	<i>Sound signal</i>	<i>Means</i>
6	Event flag		No sound	Event to start
	P, U, or Black flag			Starting Penalty P = None
	O or R flag, if applicable			RRS P5 (RRS 42)
5	White flag with number 5		1	Warning signal
4	Blue flag with number 4	White flag	1	Preparatory signal
3	Pink flag with number 3	Blue flag	1	3 minutes
2	Red flag with number 2	Pink flag	1	2 minutes
1	Yellow flag with number 1	Red flag	1 long	1 minute
0	Green flag	Yellow flag	1	Starting signal
+1		Green flag, Event flag, P, U or Black flag, O or R flag	No sound	

12.5 To alert boats that a race or sequence of races will begin soon, the orange starting line flag will be displayed with 1 sound at least 5 minutes before a warning signal is made.

12.6 The warning signal for each succeeding race will be made as soon as practicable.

13. COURSE CHANGES

13.1 To change the next leg of the course, the Race Committee will (a) lay a new mark, or (b) move the finishing line, or (c) move the leeward gate. When a new mark is laid, the original mark will be removed as soon as possible. When in a subsequent change a new mark is replaced, it will be replaced by an original mark. When Mark 1 has been replaced, Mark 1a is no longer a mark of the course. It will be removed as soon as practicable. This changes RRS 33.

13.2 Courses will not be shortened. This changes RRS 32.

14. THE FINISH

14.1 The finishing line will be between a staff displaying a blue 'Finish' flag on the race committee vessel and either:

14.1.1 the course side of the nearby inflatable finishing mark, or

14.1.2 a staff displaying a 'Blue' flag on the nearby race committee vessel.

15. TIME LIMITS AND TARGET TIMES

15.1 For opening series races, time limits and target times in minutes are as follows:

Event	Time Limit	Mark 1 Time Limit	Finish Window	Target Time
Men's Windsurfer	45	20	10	20-25
Women's Windsurfer	45	20	10	20-25
Men's One Person Dinghy	75	25	15	50
Women's One Person Dinghy	75	25	15	50
Men's One Person Dinghy Heavyweight	75	25	15	50
Men's Two Person Dinghy	75	25	15	50
Women's Two Person Dinghy	75	25	15	50
Men's Skiff	50	20	10	30
Women's Skiff	50	20	10	30
Mixed Multihull	50	20	10	30

15.2 For medal races, time limits and target times in minutes are as follows:

Event	Time Limit	Mark 1 Time Limit	Finish Window	Target Time
Men's Windsurfer	40	10	10	20
Women's Windsurfer	40	10	10	20
Men's One Person Dinghy	40	15	10	25
Women's One Person Dinghy	40	15	10	25
Men's One Person Dinghy Heavyweight	40	15	10	25
Men's Two Person Dinghy	40	15	10	25
Women's Two Person Dinghy	40	15	10	25
Men's Skiff	40	10	10	20
Women's Skiff	40	10	10	20
Mixed Multihull	40	10	10	20

15.3 If no boat passes Mark 1 before the Mark 1 Time Limit the race will be abandoned.

15.4 Boats failing to finish within the time stated in the Finish Window after the first boat sails the course and finishes will be scored Did Not Finish. This changes RRS 35, A4 and A5.

16. [DP] EQUIPMENT AND EQUIPMENT INSPECTION

16.1 The Equipment Regulations govern all equipment and equipment inspection matters.

- 16.2 In the event of a conflict between the ER and the Class Rules, the ER shall take precedence. This amends RRS 63.7.

17. OFFICIAL VESSELS

- 17.1 Official vessels will be marked as follows:

Competition Management	Purple Sticker with 'RC' in white
Technical Committee	Green flag with 'Measurer' in white
International Jury	Purple flag with 'Jury' in white
One Person Dinghy Equipment Support	Flag with the Laser insignias
Medical	White flag with 'Medical' in red
Marshall	Yellow Flag with 'Marshall' in black
Media	White flag with either 'PRS' in black, 'Photo' in blue or 'RHB' in blue
OBS	Green flag with 'OBS' in white
Omega	White flag with 'TIMING' in red
VIP	White flag with 'PRT' in black
Principal Race Officer	Purple flag with 'PRO' in white
Technical Delegate	Purple flag with 'TD' in white
Safety	Pink flag with 'Rescue' in red
Security	Red flag with 'SEC' in white

- 17.2 A boat shall not request redress due to the actions by any official vessel, drone or helicopter. This changes RRS 60.1(b).

18. SCORING

- 18.1 The Low Point System of RRS Appendix A will apply. RRS B8 is deleted.
- 18.2 When fewer than 3 opening series races have been completed, a boat's series score will be the total of her race scores. When 3 or more opening series races have been completed, a boat's series score will be the total of her race scores excluding her worst score. However, the score from any Medal Race will not be excluded.
- 18.3 A boat starting later than 4 minutes after her starting signal will be scored Did Not Start. This changes RRS A5.
- 18.4 1 race is required to be completed to constitute an Event.
- 18.5 To request a correction of an alleged error in posted race or series results, a boat may complete and submit a scoring enquiry available from the Race Officials Secretariat. Athletes' attention is drawn to SI 19.3
- 18.6 Medal Race:

- 18.6.1 For the Medal Race RRS A4 is changed so that the points are doubled. RRS A5.2 is changed so that the scores are based on the number of boats assigned in that race and then doubled. Discretionary and standard penalties will not be doubled.
- 18.6.2 For boats assigned to compete in the medal race, ties will be broken by the Medal Race score. This changes RRS A8. For tied boats with the same points score in the Medal Race, ties will be broken applying RRS A8 to the opening series scores.
- 18.6.3 The boats competing in the medal race shall be ranked highest in the regatta. This may not apply to a boat disqualified under RRS 6, 69 or World Sailing Regulations 19 or 35.
- 18.6.4 A boat assigned to compete in the Medal Race shall make a genuine effort to start, sail the course and finish. The penalty for a breach of this instruction will be ranking the boat tenth in the regatta. If there are 2 such boats, they will be ranked ninth and tenth, in order of their opening-series ranks, and so on. This changes RRS A2 and A5.
- 18.7 If an athlete is informed by the Organizing Authority that they are not permitted to compete on any day due to coronavirus restrictions, the boat will be scored DNC for all races affected. This shall not be grounds for redress and changes RRS 62.1.

19. PROTESTS, PENALTIES AND REQUESTS FOR REDRESS

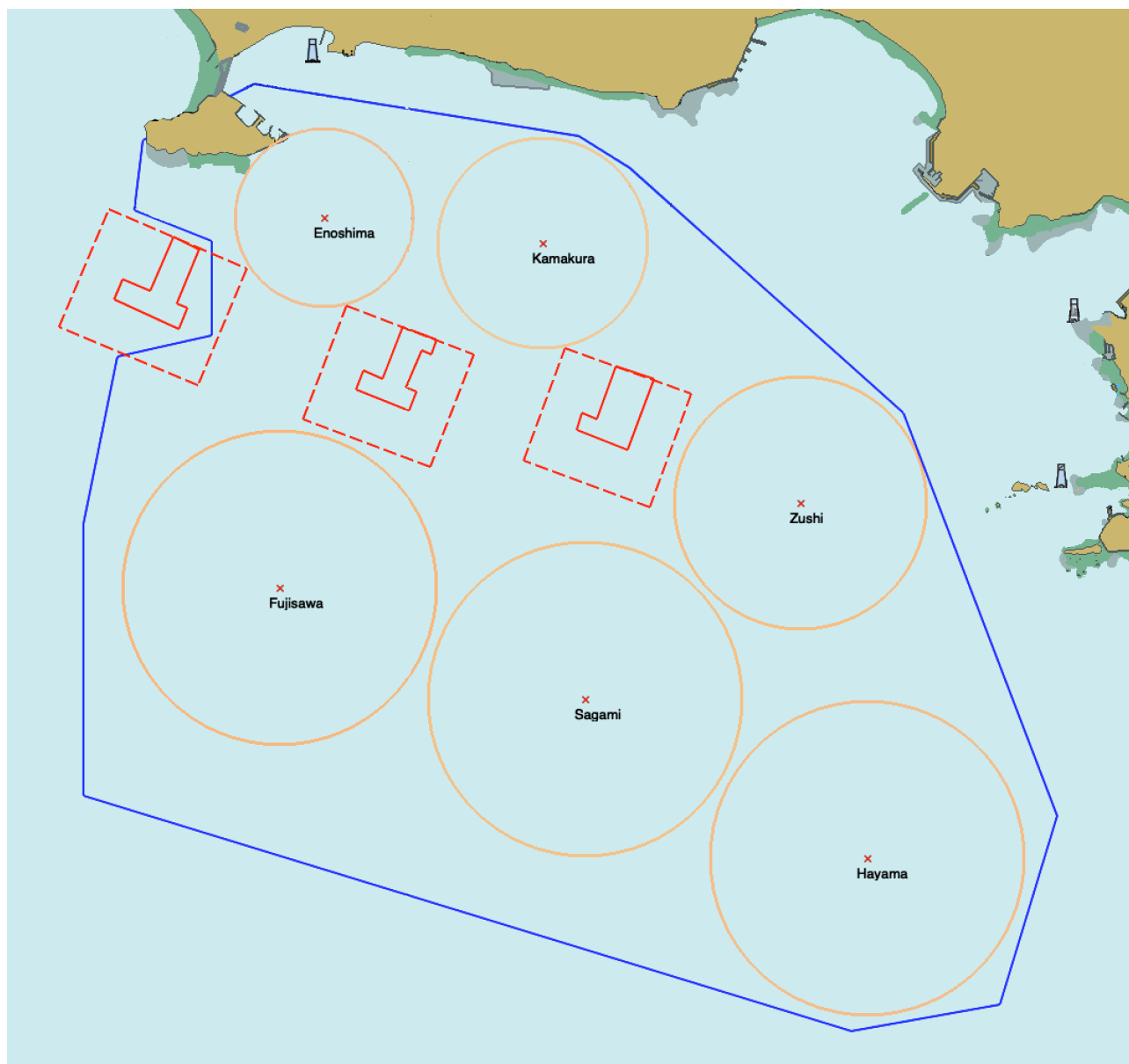
- 19.1 Hearing request forms are available from the Race Officials Secretariat. Protests and requests for redress or reopening shall be delivered to the Race Officials Secretariat before the appropriate time limit.
 - 19.1.1 A link to an online system that will enable paperless submissions of protests, requests, scoring enquiries and declarations may be published. Submissions into this system will be considered as delivered to the Race Officials Secretariat.
- 19.2 The protest time limit for each Event is the number of minutes shown below after either a) the last boat has finished the last race of the day, or b) the Race Committee signals no more racing today, whichever is the later.

Race Area	Time
Enoshima, Kamakura, Fujisawa, Zushi	60
Sagami, Hayama	90

- 19.3 A request for redress based on an incident identified in a scoring enquiry will meet the time limit if:
 - 19.3.1 the scoring enquiry was delivered to the Race Officials Secretariat (Race Office) within the time limit specified in RRS 62.2 as changed by SI 19.2; and
 - 19.3.2 the request for redress is delivered to the Race Officials Secretariat (Race Office) as soon as reasonably possible after being notified of the race committee's response to the scoring enquiry. The response by the race committee may be notified in writing or through the online system. This changes RRS 62.2.
- 19.4 Notices will be posted within 30 minutes of the protest time limit to inform competitors of hearings in which they are parties or named as witnesses. Hearings will be held in the stated room beginning at the time posted. Hearings may be scheduled to begin up to 30 minutes before the protest time limit.
- 19.5 A list of boats that have been penalized under Appendix P for breaking RRS 42 and under SI 19.8 will be posted.

- 19.6 Penalties for breaches of the class rules, or rules in the NoR and SIs marked [DP], or [SP] should the case go to a hearing, are at the discretion of the International Jury and may be less than disqualification.
- 19.7 Breaches of NoR 1.1 (COVID-19 provisions) and NoR 20 (Insurance) or rules in the SIs or NoR marked [NP] shall not be grounds for a protest by a boat. This changes RRS 60.1(a).
- 19.8 For breaches of a rule marked [SP], or listed in the list of standard penalties, the Race Committee or Technical Committee may apply a standard penalty without a hearing or a discretionary penalty may be applied by the International Jury with a hearing. A list of these breaches and the associated standard penalties will be posted on the Official Notice Board. However, the Race Committee or Technical Committee may protest a boat if it considers a standard penalty is inappropriate. A boat that has been penalised with a standard penalty shall neither be protested by another boat for the same incident nor can another boat request redress for this committee action. This changes RRS 60.1, 63.1 and A5.
- 19.9 When a penalty is given under SI 19.6 or SI 19.8 before a race is started, the penalty will remain if that race is restarted or resailed. This changes RRS 36.
- 19.10 In RRS 62.2(a) and 66.2(a) change 'the last scheduled day of racing' to 'on the last scheduled day of the opening series for each Event'.
- 19.11 Any penalty or score adjustment imposed on the day of a medal race before boats go afloat will be notified by a notice in the launching area before flag D is displayed for that Event, or by a notice posted on the race committee vessel displaying flag L.

SI Addendum A Race Areas



The locations of the racing areas shown above are indicative and may be changed significantly by the Organizing Authority should they prove to be unsuitable.

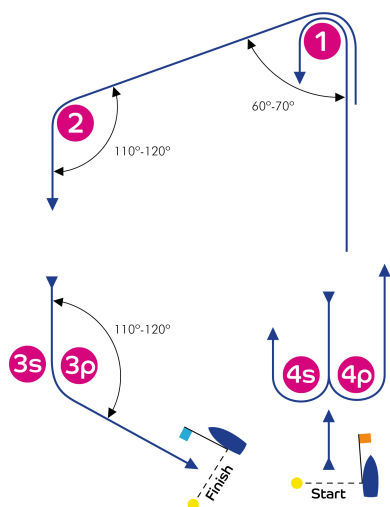
SI Addendum B
Competition Schedule

	Sunday, 25 July 2021		Monday, 26 July 2021		Tuesday, 27 July 2021		Wednesday, 28 July 2021		Thursday, 29 July 2021		Friday, 30 July 2021	
	Race Area Warning Signal	#	Race Area Warning Signal	#	Race Area Warning Signal	#	Race Area Warning Signal	#	Race Area Warning Signal	#	Race Area Warning Signal	#
Men's Windsurfer	Enoshima 1200	3	Kamakura 1500	3	Reserve		Fujisawa 1200	3	Kamakura 1515	3	Reserve	
Women's Windsurfer	Enoshima 1500	3	Kamakura 1200	3	Reserve		Fujisawa 1210	3	Kamakura 1300	3	Reserve	
Men's One Person Dinghy	Kamakura 1430	2	Enoshima 1200	2	Fujisawa 1210	2	Reserve		Fujisawa 1200	2	Enoshima 1430	2
Women's One Person Dinghy	Kamakura 1200	2	Enoshima 1430	2	Fujisawa 1200	2	Reserve		Fujisawa 1210	2	Enoshima 1200	2
Men's One Person Dinghy Heavyweight					Kamakura 1300	2	Zushi 1200	2	Enoshima 1430	2	Reserve	
Men's Two Person Dinghy							Enoshima 1200	2	Zushi 1500	2	Zushi 1200	2
Women's Two Person Dinghy							Enoshima 1445	2	Enoshima 1200	2	Zushi 1210	2
Men's Skiff					Enoshima 1445	3	Sagami 1200	3	Reserve		Kamakura 1200	3
Women's Skiff					Enoshima 1200	3	Sagami 1445	3	Reserve		Kamakura 1445	3
Mixed Multihull							Kamakura 1430	3	Sagami 1200	3	Reserve	

	Saturday, 31 July 2021		Sunday, 1 August 2021		Monday, 2 August 2021		Tuesday, 3 August 2021		Wednesday, 4 August 2021		Thursday, 5 August 2021	
	Race Area Warning Signal	#	Race Area Warning Signal	#	Race Area Warning Signal	#	Race Area Warning Signal	#	Race Area Warning Signal	#	Race Area Warning Signal	#
Men's Windsurfer	Enoshima 1530	1	Reserve									
Women's Windsurfer	Enoshima 1430	1	Reserve									
Men's One Person Dinghy	Reserve		Enoshima 1430	1	Reserve							
Women's One Person Dinghy	Reserve		Enoshima 1530	1	Reserve							
Men's One Person Dinghy Heavyweight	Sagami 1200	2	Fujisawa 1500	2	Reserve		Enoshima 1430	1	Reserve			
Men's Two Person Dinghy	Reserve		Zushi 1210	2	Fujisawa 1430	2	Reserve		Enoshima 1430	1	Reserve	
Women's Two Person Dinghy	Reserve		Zushi 1200	2	Enoshima 1200	2	Reserve		Enoshima 1530	1	Reserve	
Men's Skiff	Enoshima 1200	3	Reserve		Enoshima 1530	1	Reserve					
Women's Skiff	Kamakura 1200	3	Reserve		Enoshima 1430	1	Reserve					
Mixed Multihull	Zushi 1200	3	Enoshima 1200	3	Reserve		Enoshima 1530	1	Reserve			

SI Addendum C Course Diagrams

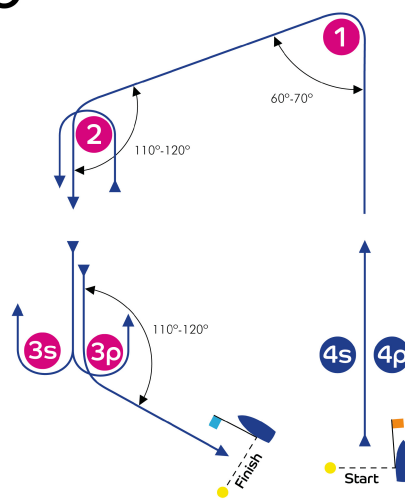
I



Course: Inner Trapezoid

Signal	Mark Rounding Order
I2	Start - 1 - 4s/4p - 1 - 2 - 3p - Finish
I3	Start - 1 - 4s/4p - 1 - 4s/4p - 1 - 2 - 3p - Finish
I4	Start - 1 - 4s/4p - 1 - 4s/4p - 1 - 4s/4p - 1 - 2 - 3p - Finish

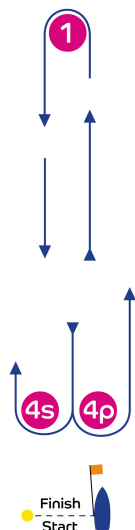
O



Course: Outer Trapezoid

Signal	Mark Rounding Order
O2	Start - 1 - 2 - 3s/3p - 2 - 3p - Finish
O3	Start - 1 - 2 - 3s/3p - 2 - 3s/3p - 2 - 3p - Finish
O4	Start - 1 - 2 - 3s/3p - 2 - 3s/3p - 2 - 3s/3p - 2 - 3p - Finish

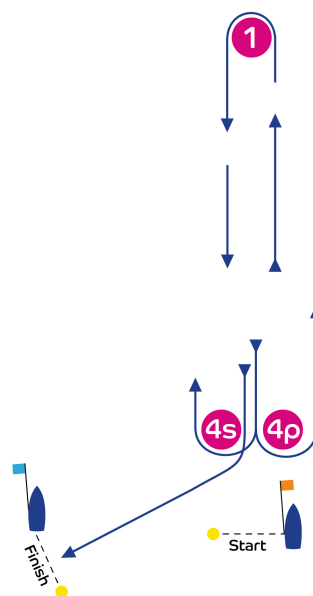
L



Course: Windward/Leeward

Signal	Mark Rounding Order
L2	Start - 1 - 4s/4p - 1 - Finish
L3	Start - 1 - 4s/4p - 1 - 4s/4p - 1 - Finish
L4	Start - 1 - 4s/4p - 1 - 4s/4p - 1 - 4s/4p - 1 - Finish

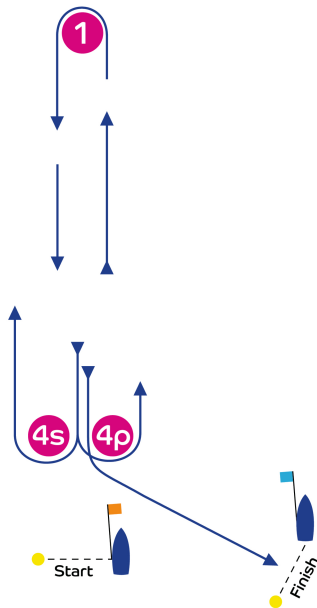
LG



Course: Windward/Leeward

Signal	Mark Rounding Order
LG2	Start - 1 - 4s/4p - 1 - 4s - Finish
LG3	Start - 1 - 4s/4p - 1 - 4s/4p - 1 - 4s - Finish
LG4	Start - 1 - 4s/4p - 1 - 4s/4p - 1 - 4s/4p - 1 - 4s - Finish

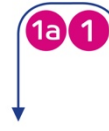
LR



Course: Windward/Leeward

Signal	Mark Rounding Order
LR2	Start - 1 - 4s/4p - 1 - 4p - Finish
LR3	Start - 1 - 4s/4p - 1 - 4s/4p - 1 - 4p - Finish
LR4	Start - 1 - 4s/4p - 1 - 4s/4p - 1 - 4s/4p - 1 - 4p - Finish

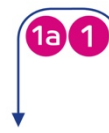
LA



Course: Same as Course L except with Offset Mark 1A

Signal	Mark Rounding Order
LA2	Start - 1 - 1a - 4s/4p - 1 - 1a - Finish
LA3	Start - 1 - 1a - 4s/4p - 1 - 1a - 4s/4p - 1 - 1a - Finish
LA4	Start - 1 - 1a - 4s/4p - 1 - 1a - 4s/4p - 1 - 1a - 4s/4p - 1 - 1a - Finish

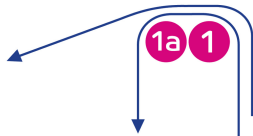
LR A



Course: Same as Course LR except with Offset Mark 1A

Signal	Mark Rounding Order
LR A2	Start - 1 - 1a - 4s/4p - 1 - 1a - 4p - Finish
LR A3	Start - 1 - 1a - 4s/4p - 1 - 1a - 4s/4p - 1 - 1a - 4p - Finish
LR A4	Start - 1 - 1a - 4s/4p - 1 - 1a - 4s/4p - 1 - 1a - 4s/4p - 1 - 1a - 4p - Finish

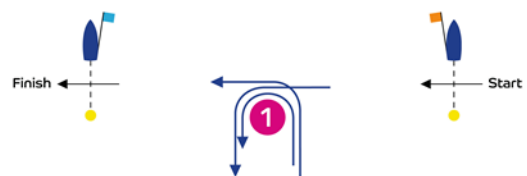
IA



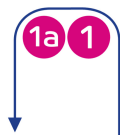
Course: Same as Course I except with Offset Mark 1A

Signal	Mark Rounding Order
IA2	Start - 1 - 1a - 4s/4p - 1 - 1a - 2 - 3p - Finish
IA3	Start - 1 - 1a - 4s/4p - 1 - 1a - 4s/4p - 1 - 1a - 2 - 3p - Finish
IA4	Start - 1 - 1a - 4s/4p - 1 - 1a - 4s/4p - 1 - 1a - 4s/4p - 1 - 1a - 2 - 3p - Finish

WRS



LGA



Course: Same as Course LG except with Offset Mark 1A

Signal	Mark Rounding Order
LGA2	Start - 1 - 1a - 4s/4p - 1 - 1a - 4s - Finish
LGA3	Start - 1 - 1a - 4s/4p - 1 - 1a - 4s/4p - 1 - 1a - 4s - Finish
LGA4	Start - 1 - 1a - 4s/4p - 1 - 1a - 4s/4p - 1 - 1a - 4s/4p - 1 - 1a - 4s - Finish

Course: Windward/Leeward with Reaching Start/Finish

Signal	Mark Rounding Order
WRS1	Start - 1 - 4s/4p - 1 - Finish
WRS2	Start - 1 - 4s/4p - 1 - 4s/4p - 1 - Finish
WRS3	Start - 1 - 4s/4p - 1 - 4s/4p - 1 - 4s/4p - 1 - Finish

SI Addendum M Medal Racing

M1 Sailing Instructions

M1.1 Delete SI 12.4 and replace with:

RRS 26 and Preparatory Signals in Race Signals are deleted. Races will be started using the following signals. Times shall be taken from the display of visual signals. This changes RRS 26, Race Signals and RRS P5.2(c).

<i>Minutes before starting signal</i>	<i>Visual signal displayed</i>	<i>Visual signal removed</i>	<i>Sound signal</i>	<i>Means</i>
4	Event flag		No sound	Event to start
	P, U, or Black flag			Starting Penalty P = None
	O or R flag, if applicable			RRS P5 (RRS 42)
3	Pink flag with number 3		1	Warning Signal
2	Red flag with number 2	Pink flag	1	Preparatory Signal
1	Yellow flag with number 1	Red flag	1 long	1 minute
0	Green flag	Yellow flag	1	Starting Signal
+1		Green flag, Event flag, P, U or Black flag, O or R flag	No sound	

M1.2 Delete SI 4.1 and replace with:

“Notices to competitors will be posted on either:

M1.2.1 the Official Notice Board before Flag D is displayed, or

M1.2.2 the race committee starting vessel, after Flag D is displayed.”